

705 BS 5 lever sashlock



kitemarked to BS3621
insurance approved sashlock
20mm deadbolt throw
5 lever mechanism
64mm and 76mm case sizes
supplied with 2 keys
1/2" & 1" rebate sets available

	PB	SC
64mm (2.1/2")	705PB2.5 ###.##	705SC2.5 ###.##
76mm (3")	705PB3.0 ###.##	705SC3.0 ###.##
rebate sets to suit:		
1/2"	705RPB ###.##	705RSC ###.##
1"	705RPB ###.##	705RSC ###.##



706 BS 5 lever deadlock



kitemarked to BS3621
insurance approved deadlock
20mm deadbolt throw
5 lever mechanism
64mm and 76mm case sizes
supplied with escutcheons
supplied with 2 keys
1/2" & 1" rebate sets available

	PB	SC
64mm (2.1/2")	706PB2.5 ###.##	706SC2.5 ###.##
76mm (3")	706PB3.0 ###.##	706SC3.0 ###.##
rebate sets to suit:		
1/2"	706RPB ###.##	706RSC ###.##
1"	706RPB ###.##	706RSC ###.##



705 BS 5 detainer sashlock



kitemarked to BS3621
insurance approved sashlock
easily reversible latchbolt
5 detainer mechanism
64mm and 76mm case sizes
supplied with 2 keys
1/2" & 1" rebate sets available
polished brass or satin chrome
supplied with square or radius forend and strike

	PB	SC
64mm (2.1/2")	705PB2.5 ###.##	705SC2.5 ###.##
76mm (3")	705PB3.0 ###.##	705SC3.0 ###.##
rebate sets to suit:		
1/2"	705RPB ###.##	705RSC ###.##
1"	705RPB ###.##	705RSC ###.##



706 BS 5 detainer deadlock



kitemarked to BS3621
insurance approved deadlock
easily reversible latchbolt
5 detainer mechanism
64mm and 76mm case sizes
supplied with 2 keys
polished brass or satin chrome
supplied with square or radius forend and strike
1/2" & 1" rebate sets available

	PB	SC
64mm (2.1/2")	706PB2.5 ###.##	706SC2.5 ###.##
76mm (3")	706PB3.0 ###.##	706SC3.0 ###.##
rebate sets to suit:		
1/2"	706RPB ###.##	706RSC ###.##
1"	706RPB ###.##	706RSC ###.##



710 3 lever sashlock

easily reversible latchbolt
adjustable springing feature
64mm and 76mm case sizes
polished brass or satin chrome
supplied with square or radius forend and strike
supplied with 2 keys
1/2" & 1" rebate sets available

	PB	SC
64mm (2.1/2")	710PB2.5 ###.##	710SC2.5 ###.##
76mm (3")	710PB3.0 ###.##	710SC3.0 ###.##
rebate sets to suit:		
1/2"	710RPB ###.##	710RSC ###.##
1"	710RPB ###.##	710RSC ###.##



711 3 lever deadlock

64mm and 76mm case sizes
polished brass or satin chrome
supplied with square or radius forend and strike
supplied with 2 keys
1/2" & 1" rebate sets available

	PB	SC
64mm (2.1/2")	711PB2.5 ###.##	711SC2.5 ###.##
76mm (3")	711PB3.0 ###.##	711SC3.0 ###.##
rebate sets to suit:		
1/2"	711RPB ###.##	711RSC ###.##
1"	711RPB ###.##	711RSC ###.##



718 bathroom lock

easily reversible latchbolt
adjustable springing feature
8mm turn follower
for internal door applications
latchbolt operated by lever handles
deadbolt thrown by internal turn
64mm and 76mm case sizes available
polished brass or satin chrome
supplied with square or radius forend and strike

	PB	SC
2.1/2" (5mm follower)	718EB2.5 ###.##	718NP2.5 ###.##
3" (5mm follower)	718PB3.0 ###.##	718NP3.0 ###.##



750 mortice deadbolt

brass or stainless steel forend and keep
5mm or 8mm follower (please specify)

	PB	SC
64mm (2.1/2")	750EB2.5 ###.##	750NP2.5 ###.##
76mm (3")	750EB3.0 ###.##	750NP3.0 ###.##



714 euro profile sashlock case

easily reversible latchbolt
 for internal and external door use
 64mm and 76mm case size available
 brass or nickel plated forend and strike
 supplied with square or radius forend and strike

	PB	SC
64mm (2.1/2")	714EB2.5 ###.##	714NP2.5 ###.##
76mm (3")	714EB3.0 ###.##	714NP3.0 ###.##
rebate sets to suit:		
1/2"	714RPB ###.##	714RSC ###.##
1"	714RPB ###.##	714RSC ###.##



715 euro profile deadlock case

for internal and external door use
 64mm and 76mm case size available
 brass or nickel plated forend and strike
 supplied with square or radius forend and strike

	PB	SC
64mm (2.1/2")	715EB2.5 ###.##	715NP2.5 ###.##
76mm (3")	715EB3.0 ###.##	715NP3.0 ###.##
rebate sets to suit:		
1/2"	715RPB ###.##	715RSC ###.##
1"	715RPB ###.##	715RSC ###.##



716 oval profile sashlock case

easily reversible latchbolt
 for internal and external door use
 64mm and 76mm case size available
 brass or nickel plated forend and strike
 supplied with square or radius forend and strike

	PB	SC
64mm (2.1/2")	716EB2.5 ###.##	716NP2.5 ###.##
76mm (3")	716EB3.0 ###.##	716NP3.0 ###.##
rebate sets to suit:		
1/2"	716RPB ###.##	716RSC ###.##
1"	716RPB ###.##	716RSC ###.##



717 oval profile deadlock case

for internal and external door use
 64mm and 76mm case size available
 brass or nickel plated forend and strike
 supplied with square or radius forend and strike

	PB	SC
64mm (2.1/2")	717EB2.5 ###.##	717NP2.5 ###.##
76mm (3")	717EB3.0 ###.##	717NP3.0 ###.##
rebate sets to suit:		
1/2"	717RPB ###.##	717RSC ###.##
1"	717RPB ###.##	717RSC ###.##



720 box type mortice latch

easily reversible latchbolt
 heavy duty springing
 64mm and 76mm size available

	PB	SC
64mm (2.1/2")	720EB2.5 ###.##	720NP2.5 ###.##
76mm (3")	720EB3.0 ###.##	720NP3.0 ###.##



7## round tubular mortice latch

installation massively simplified
 aesthetically pleasing
 ideal for use with most stainless steel levers
 64mm and 76mm size available
 satin plated forend and strike
 also available square to retro-fit existing tubular latches

	SC
64mm (2.1/2")	7##NP2.5 ###.##
76mm (3")	7##NP3.0 ###.##



tubular mortice latch

719

64mm and 76mm size available



	PB	SC
64mm (2.1/2")	719EB2.5 ###.##	719NP2.5 ###.##
76mm (3")	719EB3.0 ###.##	719NP3.0 ###.##

budget tubular mortice latch

7##

64mm and 76mm size available

	PB	SC
64mm (2.1/2")	7##EB2.5 ###.##	7##NP2.5 ###.##
76mm (3")	7##EB3.0 ###.##	7##NP3.0 ###.##

contract mortice locks with 'easy-reverse' latchbolts

The following mortice locks have a unique site reversible latchbolt that can be easily reversed without the use of a screwdriver or any other device.

This fantastic feature allows for the handing of the lock to be quickly changed by simply turning the lock case up-side-down, pushing the latchbolt in and twisting it 180 degrees.

The lock will only allow for the reverse feature to work when the case is turned upside down, thus meaning that the latchbolt cannot be reversed once the lock is fitted - unless, of course, the lock is removed in order to do so.

contract 3 lever sashlock

3 lever mechanism
 64mm and 76mm case sizes
 easily reversible latchbolt
 brass or nickel plated finishes
 supplied with 2 keys
 13mm rebate sets available



	EB	NP
64mm (2.1/2")	7##EB2.5 ##.##	7##NP2.5 ##.##
76mm (3")	7##EB3.0 ##.##	7##NP3.0 ##.##
rebate sets to suit:		
1/2"	7##REB ##.##	7##RNP ##.##

contract 2 lever sashlock

2 lever sashlock
 64mm and 76mm case sizes
 easily reversible latchbolt
 brass or nickel plated finishes
 supplied with 2 keys



	EB	NP
64mm (2.1/2")	7##EB2.5 ##.##	7##NP2.5 ##.##
76mm (3")	7##EB3.0 ##.##	7##NP3.0 ##.##
rebate sets to suit:		
1/2"	7##REB ##.##	7##RNP ##.##

contract bathroom lock

contract bathroom lock
 for internal door applications
 easily reversible latchbolt
 5mm turn follower
 64mm and 76mm case sizes
 brass or nickel plated forend and strike



	EB	NP
64mm (2.1/2")	7##EB2.5 ##.##	7##NP2.5 ##.##
76mm (3")	7##EB3.0 ##.##	7##NP3.0 ##.##

contract full case latch

contract bathroom lock
 for internal door applications
 easily reversible latchbolt
 5mm turn follower
 64mm and 76mm case sizes
 brass or nickel plated forend and strike



	EB	NP
64mm (2.1/2")	7##EB2.5 ##.##	7##NP2.5 ##.##
76mm (3")	7##EB3.0 ##.##	7##NP3.0 ##.##

rim lock

3" or 5.1/2" sizes available
 for internal and external door
 or gate use
 black japaned or brass case



	black	brassed
3" rim lock	7##BJ ##.##	7##EB ##.##
5.1/2" rim lock	7##BJ ##.##	7##EB ##.##

rim deadlock

4" rim fixing case
 for internal and external door
 or gate use
 black japaned or brass case



	black	brassed
4" rim deadlock	7##BJ ##.##	7##EB ##.##

rim latch

4" rim fixing case
 for internal and external door
 or gate use
 black japaned or brass case



	black	brassed
4" rim latch	7##BJ ##.##	7##EB ##.##

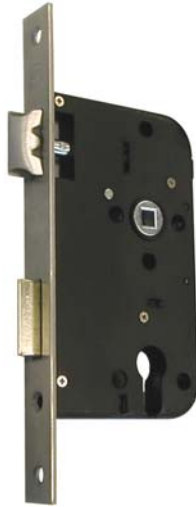
architectural mortice locks

euro profile sashlock case

732

72mm centres
60mm backset
suitable for sprung and unsprung furniture
latchbolt withdrawn by key or key
easily reversible latchbolt
brass or stainless steel forend and strike
radiussed forends available (please specify
when ordering)

	square	radius
brass	732PB	
	17.55	19.01
stainless steel	732SS	
	17.55	19.01



euro profile deadlock case

733

72mm centres
55mm backset
double throw deadbolt operated by key
brass or stainless steel forend and strike
radiussed forends available (please specify
when ordering)

	square	radius
brass	731PB	
	14.38	15.83
stainless steel	731SS	
	14.38	15.83



mortice latch lever operated

734

72mm centres
55mm backset
suitable for sprung and unsprung furniture
latchbolt withdrawn by lever from both sides of
door
non-locking
easily reversible latchbolt
brass or stainless steel forend and strike
radiussed forends available (please specify
when ordering)

	square	radius
brass	734PB	
	14.38	15.83
stainless steel	734SS	
	14.38	15.83



bathroom lock

736

78mm centres
55mm backset
suitable for sprung and unsprung furniture
latchbolt withdrawn by lever
8mm turn follower
easily reversible latchbolt
brass or stainless steel forend and strike
radiussed forends available (please specify
when ordering)

	square	radius
brass	736PB	
	18.28	19.73
stainless steel	736SS	
	18.28	19.73

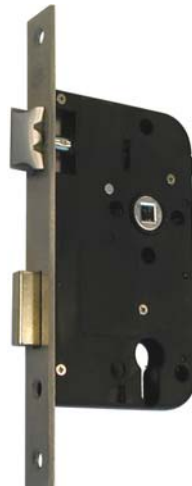


euro profile escape case

737

72mm centres
55mm backset
suitable for sprung and unsprung furniture
latchbolt withdrawn by lever or key
entry gained by key
exit by thumbturn and/or half set of lever
furniture
easily reversible latchbolt
brass or stainless steel forend and strike
radiussed forends available (please specify
when ordering)

	square	radius
brass	737PB	
	34.61	36.06
stainless steel	737SS	
	34.61	36.06



euro profile nightlatch case

735

72mm centres
55mm backset
suitable for sprung and unsprung furniture
key and handle operated from both sides of
the door
latchbolt operated by key
autodeadlocking latch - every time the door
is closed it is locked
easily reversible latchbolt
brass or stainless steel forend and strike
radiussed forends available (please specify
when ordering)

	square	radius
brass	735PB	
	17.55	19.01
stainless steel	735SS	
	17.55	19.01



cylinder systems

6 pin cylinder systems

cylinder features and benefits
patented pin 6 pin security*
long life patent protected*
drill protection in body and plug
anti-pick protection
UK oval and euro profiles
Scandinavian oval profile
rim & rim mortice

key features and benefits
no unauthorised key duplication*
keys cut only by manufacturer*
patented protection of keyblank*
multi-key profiles within masterkey system increase system capacity
2 keys supplied per master keyed cylinder as standard
standard differ cylinders come with 3 keys as standard
add £3.05 to standard differ cylinder price for keyed alike charge (ea)

ordering:

When ordering cylinders please state cylinder code followed by system type (PS, SS, BS or SD), followed by the size and the finish required

For example, when ordering a euro profile cylinder & turn (###), standard master key system (SS), 70mm - offset at 40mm/30mm, in polished brass finish, the order code would be: **###-SS-40/30-PB**

A euro profile single cylinder (###), standard differ (SD), 50mm (40/10), in satin chrome finish, the order code would be: **###-SD-40/10-SC**

euro profile cylinder & turns

size	master keyed patented system (PS)*			master keyed standard system (SS)			master keyed budget system (BS)			standard differ (SD)		
	PC	SC	PB	PC	SC	PB	PC	SC	PB	PC	SC	PB
60mm (30/30)	31.69	24.38	28.27	29.72	22.41	24.38	-	-	-	-	-	-
65mm (30/35)	53.61	46.30	53.70	35.14	27.82	30.61	-	-	-	-	-	-
65mm (35/30)	53.61	46.30	53.70	35.14	27.82	30.61	-	-	-	-	-	-
70mm (35/35)	31.69	24.38	28.27	29.72	22.41	24.38	-	16.20	15.65	-	7.75	7.20
70mm (30/40)	53.61	46.30	53.70	35.14	27.82	30.61	-	-	-	-	-	-
70mm (40/30)	53.61	46.30	53.70	35.14	27.82	30.61	-	-	-	-	-	-
75mm (35/45)	53.61	46.30	53.70	35.14	27.82	30.61	-	16.77	16.33	-	8.32	7.85
75mm (40/35)	53.61	46.30	53.70	35.14	27.82	30.61	-	16.77	16.33	-	8.32	7.85
80mm (40/40)	35.34	46.30	53.70	30.94	27.82	30.61	-	16.77	16.33	-	8.32	7.85

euro profile double cylinders

size	PC	SC	PB	PC	SC	PB	PC	SC	PB	PC	SC	PB
60mm (30/30)	36.31	28.99	33.64	32.91	25.59	27.54	-	-	-	-	-	-
65mm (30/35)	51.18	43.87	50.87	35.14	27.83	30.61	-	-	-	-	-	-
70mm (35/35)	36.31	28.99	33.64	32.91	25.59	27.54	-	12.27	11.83	-	5.10	4.68
70mm (30/40)	51.18	43.87	50.87	35.14	27.83	30.61	-	-	-	-	-	-
75mm (30/45)	51.18	43.87	50.87	35.14	27.83	30.61	-	-	-	-	-	-
75mm (35/40)	51.18	43.87	50.87	35.14	27.83	30.61	-	12.84	12.50	-	5.67	5.33
80mm (40/40)	39.96	32.64	37.88	33.64	26.32	29.24	-	12.97	12.34	-	5.82	5.49
80mm (30/50)	51.18	43.87	50.87	35.14	27.83	30.61	-	-	-	-	-	-
80mm (35/45)	51.18	43.87	50.87	35.14	27.83	30.61	-	-	-	-	-	-
85mm (30/55)	51.18	43.87	50.87	35.14	27.83	30.61	-	12.97	12.64	-	5.82	5.49
85mm (35/50)	51.18	43.87	50.87	35.14	27.83	30.61	-	-	-	-	-	-
85mm (40/45)	51.18	43.87	50.87	35.14	27.83	30.61	-	13.62	13.21	-	6.45	6.06
90mm (45/45)	51.18	43.87	50.87	35.14	27.83	30.61	-	13.62	13.21	-	6.45	6.06
90mm (35/55)	51.18	43.87	50.87	35.14	27.83	30.61	-	-	-	-	-	-
90mm (40/50)	51.18	43.87	50.87	35.14	27.83	30.61	-	14.09	13.65	-	6.94	6.47
95mm (40/55)	51.18	43.87	50.87	35.14	27.83	30.61	-	14.09	13.65	-	6.94	6.47
100mm (50/50)	51.18	43.87	50.87	35.14	27.83	30.61	-	14.53	14.04	-	7.36	6.89
100mm (45/55)	51.18	43.87	50.87	35.14	27.83	30.61	-	14.98	14.48	-	7.80	7.31
	51.18	43.87	50.87	35.14	27.83	30.61	-	14.98	14.48	-	7.80	7.31



euro profile single cylinders

size	PC	SC	PB	PC	SC	PB	PC	SC	PB	PC	SC	PB
40mm (30/10)	25.59	18.27	19.49	24.38	19.49	22.61	-	-	-	-	-	-
45mm (35/10)	25.59	18.27	19.49	24.38	19.49	22.61	-	-	-	-	-	-
50mm (40/10)	45.08	38.98	45.22	33.92	27.82	30.61	-	10.56	10.24	-	3.38	3.07
55mm (45/10)	45.08	38.98	45.22	33.92	27.82	30.61	-	11.41	11.08	-	4.24	3.90
75mm (65/10)	45.08	38.98	45.22	33.92	27.82	30.61	-	11.80	11.44	-	4.65	4.26
	45.08	38.98	45.22	33.92	27.82	30.61	-	13.36	12.84	-	6.19	5.67

cylinder systems

6 pin cylinder systems

cylinder features and benefits
patented pin 6 pin security*
long life patent protected*
drill protection in body and plug
anti-pick protection
UK oval and euro profiles
Scandinavian oval profile
rim & rim mortice



key features and benefits
no unauthorised key duplication*
keys cut only by manufacturer*
patented protection of keyblank*
multi-key profiles within masterkey system increase system capacity
2 keys supplied per master keyed cylinder as standard
standard differ cylinders come with 3 keys as standard
add £3.05 to standard differ cylinder price for keyed alike charge (ea)

ordering:

When ordering cylinders please state cylinder code followed by system type (PS, SS, BS or SD), followed by the size and the finish required

For example, when ordering an oval profile double cylinder (###), patented master key system (PS), 80mm - at 40mm/40mm, in polished chrome finish, the order code would be: **###-PS-40/40-PC**

An oval profile cylinder & turn (###), budget master keyed system (BS), 40mm, in polished brass finish, the order code would be: **###-BS-40-PB**

oval profile cylinder & turns	size	master keyed patented system (PS)*			master keyed standard system (SS)			master keyed budget system (BS)			standard differ (SD)		
		PC	SC	PB	PC	SC	PB	PC	SC	PB	PC	SC	PB
	60mm (30/30)	31.69	24.38	28.27	29.72	22.41	24.38	-	-	-	-	-	-
	70mm (35/35)	31.69	24.38	28.27	29.72	22.41	24.38	-	17.78	17.34	-	9.31	8.89
	80mm (40/40)	35.34	28.02	32.51	30.94	23.62	26.81	-	20.80	20.36	-	12.32	11.91
oval profile double cylinders	size	PC	SC	PB	PC	SC	PB	PC	SC	PB	PC	SC	PB
	60mm (30/30)	36.31	28.99	33.64	32.91	25.59	27.54	-	-	-	-	-	-
	70mm (35/35)	36.31	28.99	33.64	32.91	25.59	27.54	-	13.86	13.52	-	6.68	6.37
	80mm (40/40)	39.96	32.64	37.87	33.64	26.32	29.24	-	16.85	16.54	-	9.69	9.39
oval profile single cylinders	size	PC	SC	PB	PC	SC	PB	PC	SC	PB	PC	SC	PB
	40mm	25.59	19.49	22.61	24.37	18.28	19.49	-	-	-	-	-	-
	45mm	25.59	19.49	22.61	24.37	18.28	19.49	-	12.48	12.19	-	5.30	5.02
rim cylinders	type	PC	SC	PB	PC	SC	PB	PC	SC	PB	PC	SC	PB
	rim cylinder	26.80	20.70	24.02	15.85	15.85	17.30	-	11.72	11.41	-	4.55	4.24
	rim mortice	30.48	24.38	28.27	21.92	21.92	24.00	-	16.67	17.08	-	9.49	9.91
cam lock	type	PC	SC	PB	PC	SC	PB	PC	SC	PB	PC	SC	PB
	cam lock	35.34	29.24	33.92	28.02	28.02	30.83	-	-	-	-	-	-
scandinavian cylinders	type	PC	SC	PB	PC	SC	PB	PC	SC	PB	PC	SC	PB
	external	30.14	24.04	27.89	23.14	23.14	25.46	-	12.19	12.19	-	7.18	7.18
	double	54.19	48.09	55.80	46.30	46.30	50.92	-	24.36	24.36	-	14.33	14.33
	internal	30.14	24.04	27.89	23.14	23.14	25.46	-	12.19	12.19	-	12.19	12.19

pinson shutterbolts & housings



lock

manufactured from brass bronze phospher and nickel silver
4 pin, pin tumbler action
anti-pick plate and drill resistant mechanism
lock available to differ or keyed alike in sets with nickel silver keys
1/2 steel bar goes right through the shutter guide

housing

manufactured from drop forged weldable steel
anti vandal shape
precision milled lock aperture

housing	PINHOU 8.61
lock	PINK##* 8.50

*insert key no. required
where '##' is shown

rim nightlatches

758 narrow stile traditional nightlatch

758BL



40mm backset
 deadlocking by reverse turn of the key in the outside cylinder
 supplied case only or with 5 pin cylinder & **4 keys**
 choice of silver grey or brass plated finish

	case only	c/w PB cylinder	c/w SC cylinder
silver grey	758SECASE	758SE/PB	758SE/SC
	4.29	5.71	5.71
brass plated	758BLCASE	758BL/PB	-
	4.99	6.29	-

759 standard traditional nightlatch

759SE



60mm backset
 deadlocking by reverse turn of the key in the outside cylinder
 supplied case only or with 5 pin cylinder & **4 keys**
 choice of silver grey or brass plated finish

	case only	c/w PB cylinder	c/w SC cylinder
silver grey	759SECASE	759SE/PB	759SE/SC
	4.29	5.71	5.71
brass plated	759BLCASE	759BL/PB	-
	4.99	6.29	-

761 narrow stile nightlatch



40mm backset
 deadlocking from the inside by use of snib on the case
 supplied case only or with 5 pin cylinder & **4 keys**
 choice of silver grey or brass plated finish

	case only	c/w PB cylinder	c/w SC cylinder
silver grey	761SECASE	761SE/PB	761SE/SC
	6.00	7.00	7.00
brass plated	761BLCASE	761BL/PB	-
	6.60	7.60	-

760 standard nightlatch



60mm backset
 deadlocking from the inside by use of snib on the case
 supplied case only or with 5 pin cylinder & **4 keys**
 choice of silver grey or brass plated finish

	case only	c/w PB cylinder	c/w SC cylinder
silver grey	760SECASE	760SE/PB	760SE/SC
	6.00	7.00	7.00
brass plated	760BLCASE	760BL/PB	-
	6.60	7.60	-

709 replacement rim cylinder

709

5 pin cylinder & **4 keys**
 retro-fit, for use with rim nightlatch cases
 brass or satin chrome plated finish



	polished brass	satin chrome
rim cylinder c/w 4 keys	709PB	709SC
	2.31	2.31

cylinder pulls



silver sprayed	3050AS	gold sprayed	3050AG
	1.01		1.25
aluminium	195S	brass	395S
	5.82		7.43
satin stainless steel	295S	plain victorian - brass	392
	6.00		1.09
polished stainless steel	295SPSS	plain victorian - chrome	392(CP)
	6.50		2.15
colour coated	495S	georgian rope - brass	392A
	8.33		1.27

redlam panic bolt & replacement ceramic tubes



Allows emergency access from otherwise secured area
 Supplied complete with breakable ceramic tube and hammer
 Replacement ceramic tubes available

redlam mk 1	REDLAMMK1	37.00
redlam mk 2	REDLAMMK2	55.70
replacement ceramic tube	CERAM	3.14
hammer & chain only	REDLAMHAM	9.94



emergency key boxes



Essential for the high visibility storage of keys near to emergency fire exits or doors that may need to be opened urgently. Coloured red for clear recognition. Robust plastic cabinet with clear sight glass that can be broken to retrieve keys in seconds. Replacement glass pieces and hammer & chain available separately

red key box	REDKEY	9.00
replacement glass	REDKEYGLASS	3.20
hammer & chain only	REDLAMHAM	9.94

budget lockable key cabinets



Budget Key Cabinet offering 18 to 140 key hooks in a strong compacted cabinet at a competitive price.

18 hooks	BLKC18	19.00
28 hooks	BLKC28	25.50
54 hooks	BLKC54	28.00
90 hooks	BLKC90	36.50
140 hooks	BLKC140	44.50

fixed hook key cabinets



High Grade range of cabinets offer fixed hook positions, flat anti-force cabinet door and key record card.

17 hooks	H 195 x W145 x D 40mm	1.2kg	FHKC17	28.00
27 hooks	H 245 x W175 x D 40mm	1.6kg	FHKC27	36.00
51 hooks	H 340 x W240 x D 40mm	3.0kg	FHKC51	43.00
63 hooks	H 340 x W240 x D 40mm	3.0kg	FHKC63	51.00
99 hooks	H 395 x W290 x D 40mm	4.2kg	FHKC99	64.00
149 hooks	H 395 x W290 x D 80mm	6.0kg	FHKC149	82.00
199 hooks	H 395 x W290 x D 80mm	6.3kg	FHKC199	98.00
298 hooks	H 395 x W(2x) 290 x D 80mm	12.0kg	FHKC298	166.00
398 hooks	H 395 x W(2x) 290 x D 80mm	13.0g	FHKC398	184.00

adjustable hook key cabinets



High Grade range of cabinets offer the full convenience of adjustable hook racks, flat anti-force cabinet door and key record card.

80 hooks	H 450 x W340 x D 80mm	4.2kg	AHHC80	99.00
110 hooks	H 550 x W395 x D 80mm	6.0kg	AHHC110	148.00
165 hooks	H 550 x W395 x D 130mm	6.3kg	AHHC165	199.00

digital key cabinet



Offers the highest security with digital entry and high impact body
 The digital keypad is battery powered with easy to operate buttons and code change options
 H 400 x W300 x D 150mm 10.5kg

60 hook digital key cabinet	DKC	585.00
-----------------------------	-----	--------

drawer safe



Security Drawer Unit which will fix under any desk, shelf or cupboard and is supplied with fixings

security drawer unit	SDU	23.85
----------------------	-----	-------